

Swansea and Carmarthen Bay Coastal Engineering Group
Lavernock Point to St Ann's Head SMP Review
Preferred policies: Lavernock Point to Barry Island

- Legend**
- Policy unit extents
 - Policy units
 - Policy scenario areas
 - Scheduled Monuments
 - International Nature Conservation Designations
 - National Nature Conservation Designations

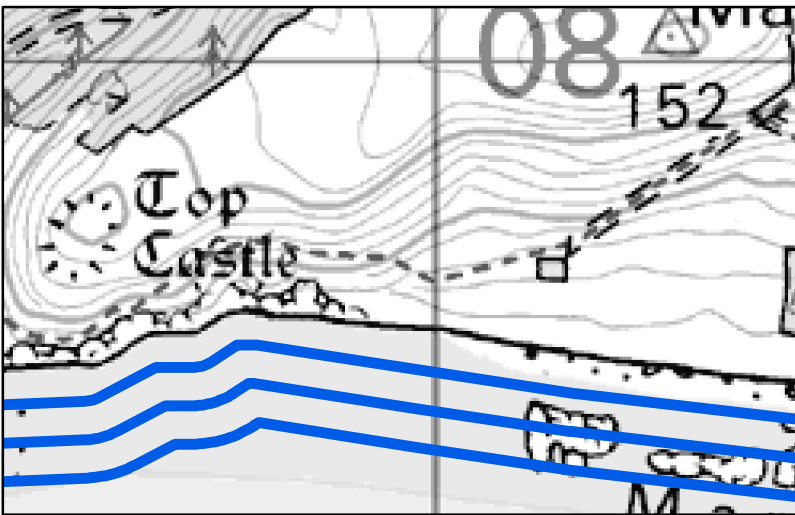
Area currently at risk from flooding during the extreme flood event, 0.1% annual probability of occurrence (1 in 1000yr return period).

It is predicted that the probability and extent of flood risk will increase over time as a result of climate change. However, detailed assessments are outside the scope of the SMP.

Job Number: DCSSMP
Drawn By: JSM

- Shoreline management policies
- No active intervention
 - Managed realignment
 - Hold the line
 - Advance the line

Boxes showing cliff erosion estimates represent predicted erosion from the shoreline position in year 0. They are only shown where there is a policy of NAI and cliff erosion is the main risk.



Policy lines are not indicative of current shoreline position.

Lines represent the preferred shoreline management policy for each location (most landward line is the first epoch).

Up to 20 years
20 to 50 years
50 to 100 years

